

Delmar was drafted into the U.S. Army in 1943, serving under General Patton in the 6th Armored Division in the European Theater. During this service obligation, Mathilde taught school at the Sully Public School. Delmar was wounded in action while stationed in Germany and was awarded the Purple Heart. When he returned home in September of 1945, he and Mathilde lived most of their remaining years in Sully where Delmar was a mail carrier for the Sully rural route for thirty-four years and Mathilde as a homemaker for the rest of her life.

Mathilde loved her Lord and Savior having given her heart to Him at the age of seventeen. She loved music, playing the piano and organ for Sully school and church for sixty-two years. She was recognized by the Lynnvilleville-Sully School Board as the sixth "Citizen of the Year" award in February 1991.

With Pastor Robert Bear as pastor and leader, Mathilde assisted in initiating a summer Bible School program in the Sully Community Church.

Before the 1982 Sully Centennial was held, Mathilde worked with a committee of three women planning and publishing a 460-page centennial book for the town of Sully.

Mathilde and Delmar retired in 1976 and enjoyed eleven winters in Mesa, Arizona. While there she accompanied on the piano and organ for musical and church services in the Court.

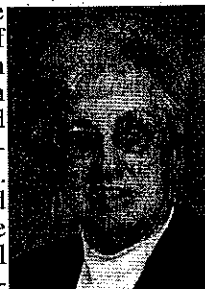
Those left to cherish her memory are: her two sons and their wives: Terry and Karen Schultz of The Villages, Florida and Roger and Carol Schultz of Clive, Iowa; four grandchildren: Kim (Matt) Doty, Kris (Wayne) Vander Leest, Cindy (Ryan) Walters, and Sena (Mike) Wal-

Diamond Trail News, September 9, 2009

## Obituary

### Mathilde Schultz

Mathilde Viola Brand Schultz was born on April 30, 1919, two miles north of Killduff, Iowa. She was the youngest of five children that were born to Charles and Marie (Nelemans) Brand. She passed away at the Pella Regional Health Center-Long Term M. Schultz Care Center on



Thursday evening, September 3, 2009, at the age of ninety.

Mathilde started school at a rural two-room school near Killduff and later moved to Sully when her father passed away when she was eight years old. She graduated from Sully High School in 1936. She then enrolled in Iowa State Teachers College in Cedar Falls, Iowa, for a short course which would enable her to teach in the rural schools of Jasper County. During World War II she reentered college at Central College in Pella and Drake University in Des Moines where she earned her Bachelor of Science Degree which enabled her to teach fourth grade at Sully Elementary School for the remainder of her thirty-four years of teaching. In 1974 Mathilde was honored in the 1974 edition of Outstanding Elementary Teachers of America.

On December 22, 1939, she was united in marriage with Delmar W. Schultz at the parsonage of the Sully Community Church. To this union two sons were born: Terry Lee and Roger

ters; and seven great-grandchildren.

Mathilde will be remembered as a loving wife, mother, grandmother, great-grandmother. Her memory will long live in the lives of her loved ones.

Funeral services were held Tuesday, September 8, 2009, at the Sully Community Church. Burial took place at the Sully Cemetery. Memorials may be given to the Sully Community Church, P.O. Box 463, Sully, Iowa 50251.