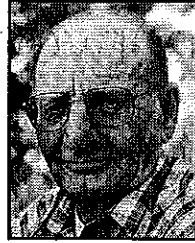


James LaVerne Sherwood, 76

Funeral services for James LaVerne Sherwood, 76, of Belle Plaine, were Fri., Aug. 21, 2009, at Hrabak Funeral Home in Belle Plaine with Pastor Charles Johnson officiating. Burial was in Oak Hill Cemetery, Belle Plaine, with military rites by Jennings-Bradshaw American Legion Post No. 39. Mr. Sherwood died Aug. 17, at St. Luke's Hospital in Cedar Rapids following a lengthy illness.

Casket bearers were Tom Judy, Dean Huls, Marc Olson, Matt Olson, Craig Olson, Matt Sherwood, Kurt Shedenhelm and Kevin Shedenhelm. Music was provided by organist, Judy Parizek, and vocalist, Anna Upah.



James LaVerne Sherwood was born July 6, 1933, at Hartwick, the son of Howard and Iona Jones Sherwood. He attended Brooklyn High School, graduating in 1951. He married Norma Olson on May 16, 1953, in Brooklyn. During his lifetime, he was a paving superintendent for Manatts for many years, and was a long-time semi driver for the Co-op. He served in the United States Army from 1953 to 1955, where he saw active service in Korea and Japan. He was a member of the Jennings-Bradshaw American Legion Post No. 39 for 46 years and was past commander. Before moving to his present home in Belle Plaine in 1962, he had resided in Brooklyn and Hartwick. He enjoyed fishing and especially enjoyed being with his grandchildren. His family was very important to him and they will miss him dearly.

He is survived by his wife, Norma, of Belle Plaine; four sons, Randy (Bonnie) of Van Horne, Scott (Sondra) of Belle Plaine, Dave (Ellen) of Chelsea, and Chad (Kris) of Atkins; a brother, Charles (Joy) of Eldridge; uncle, Dick (Pat) Sherwood, of Belle Plaine; step-mother, Lois Sherwood of Belle Plaine; step-sister, Winifred (Lloyd) Schild of Chelsea; six grandchildren, Nick, Jordan, Austin, Zach, Keaton and Stephanie; and three step-grandsons, Chet, Chad and Clay.

In addition to his parents, he was preceded in death by a sister, Ruth Ann Shedenhelm, and a brother, Roger.

Hrabak Funeral Home in Belle Plaine was in charge of arrangements.

PCCR Sep 21, 2009