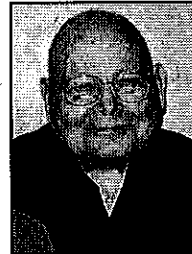

PCCR Aug 26, 2009

Duane Stephen, 77

Duane Stephen, 77, of New Sharon passed away Wednesday, Aug. 19, 2009, at the Grinnell Regional Medical Center. Funeral services were held at 10:30 a.m. on Saturday, Aug. 22, at the Harden Funeral Home in New Sharon. Interment was in Friends Cemetery in New Sharon. In lieu of flowers, memorials may be directed to the Harvest Community Fellowship. Friends may send condolences or sign the online guestbook at www.hardenfuneralhomes.com. Harden Funeral Home is in charge of arrangements.



Duane Marvin Stephen was born Nov. 12, 1931, near Barnes City to Charlie and Glemá (McClure) Stephen. He attended country schools and graduated from Montezuma High School with the class of 1950. He served in the United States Army from 1952 to 1954. Duane was united in marriage to Lois Eflin on June 22, 1954. They are the parents of three children, Florene, Royce and Cindy. Duane farmed most of his life near New Sharon. Traveling and camping was a big part of Duane's life. He loved to fish and hunt. Duane enjoyed visiting in the mornings at the coffee shop. He was a member of the Farm Bureau, the Good Sam Camping Club, and the Coffin-Miller American Legion Post 446 in New Sharon where he served as commander and held other offices there.

His memory will be honored by his wife of 55 years, Lois; three children, Florene Williams of Springfield, Mo., Royce (Beverly) Stephen of New Sharon, and Cindy (Bill) McConkey of Eaglewood, Colo.; five grandchildren, Robin McConkey of Ontario, Ore., Scott McConkey of Englewood, Colo., Adam (Marshina) Stephen of Oskaloosa, Stephanie (Trevor) Harkema of Minnetonka, Minn., and Cassandra (Scott) Meier of Iowa City; two great-granddaughters, Jasmine and Natalie Stephen of Oskaloosa; one brother, Terry (Connie) Stephen of Montezuma; two sisters, Colleen (Don) Van Kampen of Montezuma, and Beverly (Dan) Malloy of Montezuma; and a brother-in-law, Les Hicks of Boise, Idaho.

Duane was preceded in death by his parents; and one sister, Sharon Hicks.