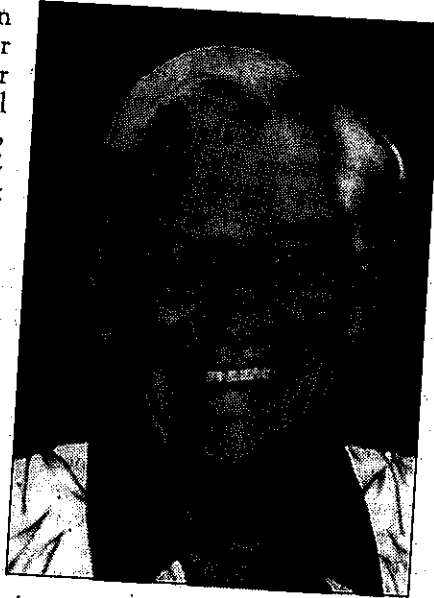


64-R 8-13-2012

Darrell Lee Blaess

Darrell Lee Blaess began his journey to heaven after passing away from lung cancer on August 7, 2012. Funeral services will be held 11:00 am, Wednesday, August 15, 2012 at Ashworth Road Baptist Church (5300 Ashworth Road in West Des Moines). The family will receive friends 5-7:00 pm Tuesday evening at the church.



Darrell was born to Darlene and Marvin Blaess on August 2, 1937, in Boone, Iowa. He graduated from Boone High School in 1955, then joined the US Army and was stationed in Panama. After his discharge he attended both Boone Junior College and the University of Iowa.

He married Karen Schwien in Boone on September 2, 1961, and they had three children together. In 1982 he married Katie Smith and gained a son Christopher.

Darrell spent his career in the life insurance industry. He began as an underwriter with Greater Iowa Life Insurance Company, Employers Mutual Life Insurance Company, 26 years at Hawkeye National Life Insurance Company, retiring as president and 10 years with his own insurance agency.

He enjoyed watching the Iowa Hawkeyes football games, reading, golf, hot-air ballooning, gardening and extensive world travel. He had a great sense of humor.

Survivors include wife, Katie; children Melanee (Michael) Stanbrough, Michael (Amy) Blaess, Mark Blaess and Christopher Blaess. Grandchildren are Nicholas and Alexander Stanbrough Alison Blaess and Michael A. Blaess. He is survived also by his parents Darlene and Marvin Blaess and his sister Elaine (Carroll) Schafbuch.

He was preceded in death by his grandson Jackson L Blaess.

The family would like to thank Drs. Morton, Witte, Deming and special thanks to Dr. Carol Horner. We would also like to thank the entire staff at Mercy hospital and the Taylor House. The comfort and compassion they gave was extraordinary.

Memorial contributions may be made to the following: The Ashworth Road Korean Baptist Church, The Juvenile Diabetes Association and the Taylor House (Iowa Health Hospice).