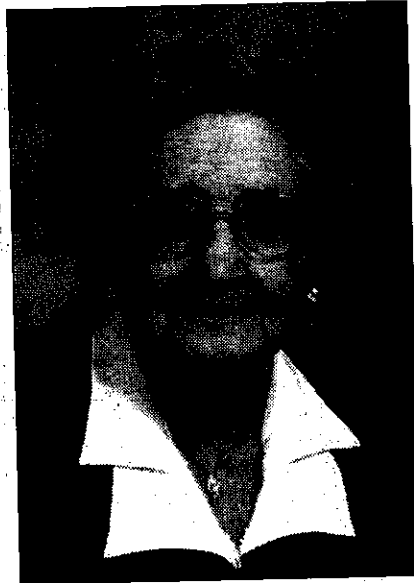


**Ferne Claus**

GH-R  
1-24-2014



Ferne Claus, 97, of Grinnell and formerly of Newburg, died Wednesday, Jan. 1, 2014, at St. Francis Manor in Grinnell.

A funeral service will be held at 10:30

a.m., Wednesday, Jan. 8, 2014, at Smith Funeral Home in Grinnell with the Rev. Keith Morrison, chaplain of Grinnell Regional Hospice, officiating. Pianist will be William Tinker. Casket bearers will be her great nieces and great nephews. Interment will be at Prairie View Cemetery near Gilman.

Friends may call at the funeral home beginning 9 a.m. on Wednesday and the family will be present one hour prior to the service.

Memorials in Ferne's name may be directed to the Newburg Congregational Church or to the St. Francis Foundation and sent in care of Smith Funeral Home, P.O. Box 368, Grinnell, Iowa 50112.

Ferne was born on May 30, 1916, in Newburg, to James and Elizabeth McLaughlin Madill. She was raised in the Newburg area and graduated from Newburg High School with the Class of 1934. Following her education, she assisted with the family home and worked for the Rudkin Hatchery in Grinnell.

On Nov. 5, 1948, she married Ervin Claus in Grinnell. The couple lived at Anthon, Iowa, and later farmed near Newburg. She was a homemaker and assisted with the family farm operation. Ferne and Ervin retired from farming in 1978 and spent their winters in Mesa, Ariz. In 1994, they moved to Seeland Park in Grinnell to make their home.

She was a long-time member of the Newburg Congregational Church, the Newburg Progress Club and a 50-year member of the Order of Eastern Star. Ferne enjoyed needlework, cooking and traveling.

Ferne is survived by numerous relatives, and was preceded in death by her parents; her husband; one sister, Irene Madill; and three brothers, Ernest, Meredith and Howard Madill.