

PCCR

# Neven Bethel Crandon, 88

2-19-2014

Neven Bethel Crandon, 88, of Gilman, died Feb. 9, 2014, at the Mayflower Community Health Care Center in Grinnell.



Funeral services were held at 11 a.m., Thursday, Feb. 13, at the Gilman Community Church in Gilman with the Rev. Judy Brandon officiating. Pallbearers were his grandchildren, Scott and Brent Clark, Amber Beaver, Aaron Thompson, Matthew and Robert Crandon, and Melissa and Sarah Radke and a great-great-nephew Colton Paul. Burial will be at Prairie View Cemetery.

Memorial contributions may be directed to the Neven Crandon Memorial Fund.

Neven was born Sept. 11, 1925, on the family farm near Gilman, the son of Arthur Bethel and Nettie Shayer Crandon. He was raised on the farm and was a graduate of Gilman High School. Following his education, he worked on the family farm and later served in the United States Army with Company C 42nd Engineer Construction Battalion.

On June 6, 1948, he was united in marriage to Jennie Noren, in Marshalltown and the couple made their home on the Crandon family farm. She passed away in September of 1952 from complications of polio. Neven later married Enid Sampson on June 24, 1956 in Delta. For many years they continued farming on the family farm and from 1977 until 1990, he also worked as a serviceman for Mid-Iowa Telephone Co-op in Gilman.

Neven was very active with the Gilman Community Church, Cyrus Lodge #338 and Onyx Chapter #350 of Eastern Star and Kate Shelley Division of National Model Railroaders Association. He was also a former Cub and Boy Scout leader of Troop 309 and had served on the board of directors of the Gilman Citizens Bank.

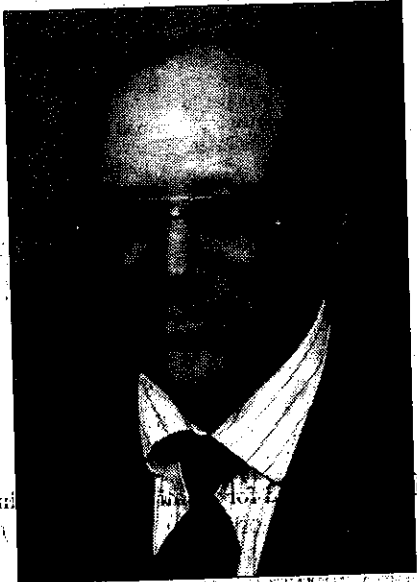
Neven held a great love for his family and attending family activities was always important to him. He enjoyed the outdoors and loved his life on the farm. He took great pride in raising livestock, including black angus cattle. He enjoyed woodworking, reading and music and held a passion for model-railroading. For many Sundays, he enjoyed taking his family on day-trips throughout the state of Iowa.

Survivors include his wife, Enid, of the Mayflower Community in Grinnell; five children, Linda (Ronald) Clark of Oregon, Wis., Christina (Timothy) Thompson of Sycamore, Ill., Robert (late Candace) Crandon of LeGrand, Cynthia Crandon of Gilman and Sheryl (Richard) Radke of Oswego, Ill.; eight grandchildren, Scott and Brent Clark, Amber (Bryce) Beaver, Aaron (Marina Sivilay) Thompson, Matthew (Elizabeth) and Robert (Trina) Crandon, and Melissa and Sarah Radke; and five great-grandchildren, Collin Beaver and Austin, Alexi, Abigail and Madelynn Crandon.

He was preceded in death by his parents; his first wife, Jennie; one sister, Bertha Doran; one brother, Wilbur Crandon; and one daughter-in-law, Candace Crandon.

# Neven Bethel Crandon <sup>614-R</sup> 2-13-2014

Neven Bethel Crandon, 88, of Gilman, died February 9, 2014, at the Mayflower Community Health Care Center in Grinnell.



Funeral services were scheduled for 11:00 a.m., Thursday, February 13, 2014, at the Gilman Community Church in Gilman with Rev. Judy Brandon officiating. Pallbearers were his grandchildren, Scott and Brent Clark, Amber Beaver, Aaron Thompson, Matthew and Robert Crandon, and Melissa and Sarah Radke and a great-great-nephew Colton Paul. Burial was at Prairie View Cemetery.

Visitation was held from 2:00 p.m. to 7:30 p.m., Wednesday, February 12, at the Smith Funeral Home in Grinnell with the family present from 5:30 to 7:30 Wednesday evening. A masonic service followed at 7:30 p.m.

Memorial contributions may be directed to the Neven Crandon Memorial Fund.

Neven was born September 11, 1925, on the family farm near Gilman, the son of Arthur Bethel and Nettie Shayer Crandon. He was raised on the farm and was a graduate of Gilman High School. Following his education, he worked on the family farm and later served in the United States Army with Company C 42nd Engineer Construction Battalion.

On June 6, 1948, he was united in marriage to Jennie Noren in Marshalltown and the couple made their home on the Crandon family farm. She passed away in September of 1952 from complications of polio. Neven later married Enid Sampson on June 24, 1956, in Delta, Iowa. For many years they continued farming on the family farm and from 1977 until 1990, he also worked as a serviceman for Mid-Iowa Telephone Co-op in Gilman.

Neven was very active with the Gilman Community Church, Cyrus Lodge #338 and Onyx Chapter #350 of Eastern Star and Kate Shelley Division of National Model Railroaders Association. He was also a former Cub and Boy Scout leader of Troop 309 and had served on the Board of Directors of the Gilman Citizens Bank.

Neven held a great love for his family and attending family activities were always important to him. He enjoyed the outdoors and loved his life on the farm. He took great pride in raising livestock, including Black Angus cattle. He enjoyed woodworking, reading and music and held a passion for model-railroading. For many Sundays, he enjoyed taking his family on day-trips throughout the state of Iowa.

Survivors include his wife, Enid, of the Mayflower Community in Grinnell; five children, Linda (Ronald) Clark of Oregon, Wisconsin, Christina (Timothy) Thompson of Sycamore, Illinois, Robert (late Candace) Crandon of LeGrand, Cynthia Crandon of Gilman and Sheryl (Richard) Radke of Oswego, Illinois; eight grandchildren, Scott and Brent Clark, Amber (Bryce) Beaver, Aaron (Marina Sivilay) Thompson, Matthew (Elizabeth) and Robert (Trina) Crandon, and Melissa and Sarah Radke; and five great-grandchildren, Collin Beaver and Austin, Alexi, Abigail and Madelynn Crandon. He was preceded in death by his parents; his first wife, Jennie; one sister, Bertha Doran; one brother, Wilbur Crandon; and one daughter-in-law, Candace Crandon.