

6H-R
11-21-2016 Raymond G. Larsen

Raymond Larsen, 86, of Grinnell, died on Friday, November 18, 2016, at Grinnell Regional Medical Center.

Per Raymond's request there will be no funeral or visitation. A private family service will be held.

Memorials may be directed to Grinnell Regional Hospice or St. Jude's Hospital.

Raymond was born on the family farm south of Grinnell on May 10, 1930. He attended country school for 8 years and graduated from Grinnell High School in 1948.

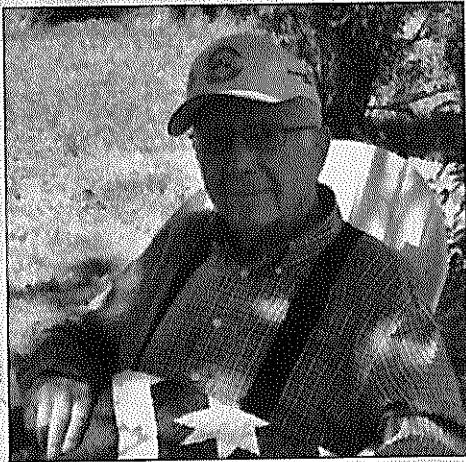
Raymond was active in 4-H and was a livestock judge at the 4-H fair. He was an active member of Farm Bureau and served on the board for several years. He also served on the Methodist Church, Malcom Elevator, County Extension and FSA boards.

In 1952, he was drafted and served in the U.S. Army until 1954. He was stationed in Alaska. Upon return home, he farmed with his father and remained on the family farm until his death.

Raymond was married to Shirley Schultz in 1955 at the Grinnell United Methodist Church. The couple made their home on the family farm.

Survivors include his wife, Shirley; five children, Sheri (Scott) Crowley, Cynthia Larsen, Diedre (Dave) Fleener, Gwenda Larsen and Kevin Larsen; five grandchildren; one sister, Louise (Melvin) Doty and two brothers, Delmar (Evelyn) Larsen and Roger Larsen.

He was preceded in death by his parents, Knudt and Olga Larsen; one brother, Kenneth Larsen; and two sisters, Clara (Warren) Ryan and Gladys Larsen.



GRINNELL RESIDENT

Raymond Larsen, 86

PCR 11-23-2016



Raymond Larsen, 86, of Grinnell, died on Friday, November 18, 2016, at Grinnell Regional Medical Center.

Per Raymond's request there will be no funeral or visitation. A private family service will be held.

Memorials may be directed to Grinnell Re-

gional Hospice or to St. Jude's Hospital.

Raymond was born on the family farm south of Grinnell on May 10, 1930. He attended country school for eight years and graduated from Grinnell High School in 1948.

Raymond was active in 4-H and was a livestock judge at the 4-H fair. He was an active member of Farm Bureau and served on the board for several years. He also served on the Meth-

odist Church, Malcom Elevator, County Extension and FSA boards.

In 1952, he was drafted and served in the U.S. Army until 1954. He was stationed in Alaska. Upon return home, he farmed with his father and remained on the family farm until his death.

Raymond was married to Shirley Schultz in 1955 at the Grinnell United Methodist Church. The couple made their home on the family farm.

Survivors include his

wife, Shirley; five children, Sheri (Scott) Crowley, Cynthia Larsen, Diedre (Dave) Fleener, Gwenda Larsen and Kevin Larsen; five grandchildren; one sister, Louise (Melvin) Doty and two brothers, Delmar (Evelyn) Larsen and Roger Larsen.

He was preceded in death by his parents, Knudt and Olga Larsen; one brother, Kenneth Larsen; and two sisters, Clara (Warren) Ryan and Gladys Larsen.