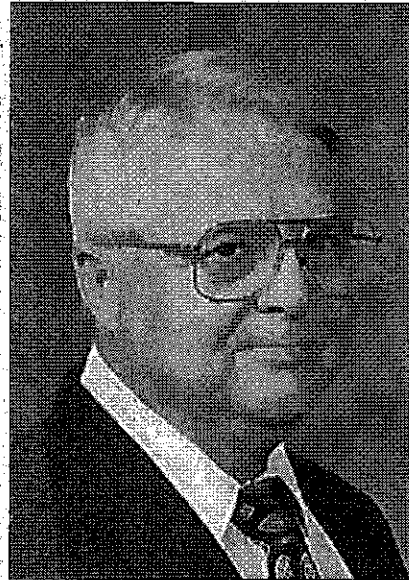


6H-R 4-22-2021

## Jerry Robertson



Jerry Robertson, 85, of Marshalltown, formerly of Mill Pond Retirement Community in Ankeny and a native of Grinnell, died April 16, 2021, at the Hubbard Care Center.

Services were scheduled for Thursday, April 22, at the Mitchell Family Funeral Home. In lieu of flowers memorials may be directed to the Dementia Society at [www.demeticsociety.org/memorials](http://www.demeticsociety.org/memorials). To send a condolence to the family, please visit [www.mitchellfh.com](http://www.mitchellfh.com) or call 641-844-1234.

Jerry Lee Robertson was born Nov. 30, 1935, the oldest of three children

to Afton "Tony" and Sarah Kate Bennington Robertson in Grinnell. Jerry was raised in Marshalltown and graduated from Marshalltown Central High School in 1954. He took additional classes following his high school graduation at Marshalltown Junior College.

On June 9, 1957, he married Shirley Ann Viers at the Central Christian Church in Marshalltown, and they raised three sons. Jerry worked for over 40 years for Fisher Controls as a parts order entry manager until his retirement in December 1997. Following his retirement and the death of his wife, he returned to work part-time for Fisher Controls.

Jerry served in the Army National Guard for six years. He was a field artillery crewman and qualified as a carbine 30 cal. marksman. He was honorably discharged on Feb. 21, 1964.

In his free time, Jerry loved to be at home—working on his garden, mowing the lawn, reading the daily newspaper or watching TV. He volunteered for the Marshalltown Emergency Food Box and the House of Compassion. Jerry loved to be with his family and tell stories. He was independent and tough, a hard worker, and someone that you could go to if you needed help.

He is survived by his children Bruce Robertson, Brad Robertson, and Brian Robertson; seven grandchildren; one great grandchild; and his siblings, Bob Robertson and Joan Ballard.

He was preceded in death by his wife Shirley and his parents.