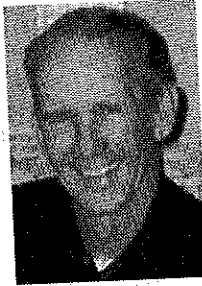


Ted 'Gene' Criswell

Ted "Gene" Criswell, 65, of Grinnell died June 5, 2008, in the home of his daughter in Danville, Iowa. Kim and her husband and children comforted him and opened their home to family and friends to be with him during his final days and at the time of his death.



Funeral services for Ted "Gene" Criswell were held at 1:30 p.m. today (Monday) at the Smith Funeral Home, with the Rev. John Epperson officiating. Pallbearers included Corey Garrels, Robert Grubbs, Charles Douglas Jr., Dwight Asberry, Lonnie Asberry, Josh Asberry, Randy Van Gorp and Chad Machin. Military rites were provided by the Grinnell Veterans Ceremonial Unit. Interment was in Lower Blue Point Cemetery in rural Poweshiek County.

Born Oct. 26, 1942, he was the son of Ted and Mamie Lillian Asberry Criswell. He was raised in Grinnell and attended Grinnell schools.

On Oct. 26, 1963, he married Janet Sue Griffith in Washington, D.C. The couple later divorced, and he did not remarry.

He served in the U.S. Air Force from 1959 to 1963, stationed at Andrews Air Force Base in Washington, D.C. In 1963, he worked with the contingent serving President John F. Kennedy's airplane, piloting the "follow-me" truck that guided the plane.

After leaving the service, he helped build airplanes. He opened and ran a service station in 1965 and, from 1964 to 2008, he also worked as a truck driver.

He was a member of the American Eagles and the National Rifle Associa-

tion. He was a devoted father, grandfather and friend who taught others about unconditional love and lived his life to the fullest. He enjoyed auctions and collectibles, baseball and watching NASCAR races. He also enjoyed sitting around and talking with friends and family.

He is survived by his children, Suzanne Garrels of Hedrick, Iowa, Ted Criswell of Richland, Iowa, Rebecca Grubbs of Douds, Iowa and Kim May of Danville, Iowa; 14 grandchildren; a brother, William "Bill" Carl Criswell of Lincoln, Neb.; two sisters, Eva Douglas of Lynchburg, Va., and Ruby Douglas of Grinnell; many nieces and nephews; and special friend Maxine Mertz, her son, Craig, and her grandson, all of Grinnell. He was preceded in death by his parents and also by four sisters, all of whom died in infancy.

Memorial may be directed to the Ted "Gene" Criswell Memorial Fund.

8016/9
GH