

day, Dec. 23, 2010, after a lengthy illness.

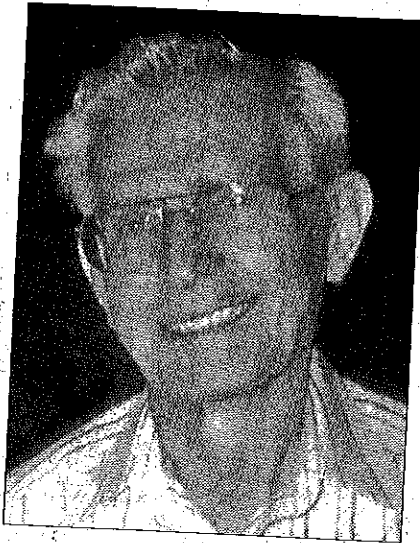
A service was held Thursday, Dec. 30, at Meldrum Mortuary in Mesa. Memorial contributions may be made to Odyssey Hospice, 6215 East Arbor Ave., Mesa, Ariz., 85206.

He was born June 23, 1922, in Interior, S.D., and later graduated from Grinnell High School. He was a veteran of World War II, and founded Tyree Construction Company in Grinnell in 1948. As a local contractor, he built many homes and businesses around Grinnell in the 1950s and 1960s, and also built the replica of The Long Home — the first building built in Grinnell upon its founding in 1854 — on the library property at the time of the 1954 Grinnell Centennial. In 1966, he moved his company to Mesa, where he built custom homes in the east valley until his retirement in 1984.

He was active in Mesa in Mesa ARC, Boy Scouts of America and Red Mountain Multigenerational Center.

He is survived by two sons, Larry Tyree and John Tyree; four grandchildren; and five great grandchildren. He was preceded in death by his wife Barbara; one sister Mildred Symonds; and one brother Ernie.

Gene M. Tyree



Gene Mondaris Tyree, 88, of Mesa, Ariz., formerly of Grinnell, died Thurs-

6 HR 12-27-30-10