

## Alta Mitchell

Alta Mitchell, 86, of Grinnell died Wednesday, Jan. 12, 2011, at her home.

A funeral service will take place Saturday, Jan. 15, at 10 a.m. at Smith Funeral Home. Burial will be in Hazelwood Cemetery.

Visitation will take place Friday

from 4 to 8 p.m. at Smith Funeral Home with family members present from 5 to 7 p.m. Memorials may be made to Grinnell Regional Hospice.

## Alta L. Mitchell



Alta L. Mitchell, 86, of Grinnell died Wednesday, Jan. 12, 2011, at her home.

A funeral service was held Satur-

day, Jan. 15, at Smith Funeral Home with John Epperson, pastor emeritus of Grinnell Christian Church, officiating. Pall bearers were Josh Peterson, Joey Burchett, Luke Winchell, Kane Crawford, Adam and Joe Schmidt, Zac, Wes and Ryan Latcham and Ethan Mitchell. Burial was in Hazelwood Cemetery.

Memorials may be made to Grinnell Regional Hospice.

She was born May 14, 1924, in Exline, Iowa, to Alva and Alma Large Garr. She was raised in Exline, receiving her education in the Exline school district.

She was united in marriage with George W. Mitchell on Nov. 28, 1942, in Unionville, Mo. They resided in Grinnell where they raised their family. She later was employed for 18 years at Miracle Recreation Equipment Co., retiring in 1986.

She was a member of Grinnell Christian Church and the Eagles Auxiliary.

She is survived by two sons, Lewis Mitchell of Melrose and Dennis Mitchell of Grinnell; 12 grandchildren; 36 great grandchildren; and 15 great great grandchildren. She was preceded in death by her parents; her husband; four brothers, Glen, William, Junior and Martin Garr; two sisters, Lillie Halterman and Virginia Wilcox; and a great grandson, Anthony Schmid.

## OBITUARIES

### Alta L. Mitchell, 86

Alta L. Mitchell, 86, of Grinnell, died Jan. 12, 2011, at her home.

Funeral services were held at 10 a.m. on Saturday, Jan. 15, at the Smith Funeral Home in Grinnell with the Rev. John Epperson, Grinnell Christian Church, officiating. Pallbearers were Josh Peterson, Joey Burchett, Luke Winchell, Kane Crawford, Adam and Joe Schmidt, Zac, Wes and Ryan Latcham, and Ethan Mitchell. Burial was in Hazelwood Cemetery in Grinnell.

Memorial contributions may be directed to Grinnell Regional Hospice.

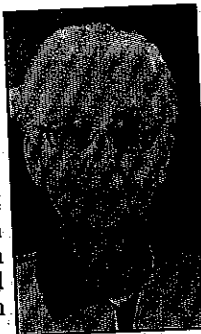
Alta was born May 14, 1924, in Exline, the daughter of Alva and Alma Large Garr. She was raised in Exline and received her education in the Exline School District.

On Nov. 28, 1942, she was united in marriage to George W. Mitchell, in Unionville, Mo. The couple lived in Grinnell where they raised their family. She was later employed at Miracle Recreation Equipment Co. in Grinnell for 18 years. She retired in 1986.

Alta was a member of the Grinnell Christian Church and the Eagles Auxiliary in Grinnell. She held a great love for her family and all their activities were very important to her. She knew the value of hard-work and enjoyed keeping busy. She enjoyed cooking and baking, and held a passion for quilting, crocheting, and needlepoint work. She loved the great outdoors, going on walks, fishing, camping, and tending to her vegetable and flower gardens.

Survivors include two sons, Lewis (Patty) Mitchell of Melrose and Dennis (Judy) Mitchell of Grinnell; 12 grandchildren; 36 great-grandchildren; and 15 great-great-grandchildren.

She was preceded in death by her parents; her husband in 2001; four brothers, Glen, William, Junior, and Martin Garr; two sisters, Lillie Halterman and Virginia Wilcox; and a great-grandson, Anthony Schmidt.



PCR 1-19-11