

PCR

Charles Bethel, 86

Charles Eugene Bethel, 86 of Grinnell, died Oct. 10, 2012, at the Mayflower Community Health Care Center in Grinnell.



Charles was born Dec. 11, 1925, in Chillicothe, Ohio, the oldest son of Clinton Dennis Bethel and Virginia Ruth McDonald Bethel. He was raised in the Chillicothe area and was a 1943 graduate of Clarksburg High School. He was a veteran of the United States Army serving in Europe during World War II.

Following his army service he graduated from Miami - Jacobs College in Dayton, Ohio where he earned an accounting degree. He was employed by General Motors in Dayton and later A.O. Smith, Inc. in both Ohio and California. While in California he met a young teacher, Esther Ann Jones.

On June 19, 1954, they were united in marriage in Grinnell. The couple then lived in Troy, Ohio prior to moving to Grinnell in 1955.

As a successful entrepreneur and business broker, Charlie specialized in acquiring, rebuilding and operating troubled businesses. In these pursuits, he was both visionary and optimistic in recognizing new opportunities.

Throughout Charlie's life he was a strong advocate of exercise and fitness. After a cancer diagnosis and surgery in 1987, he followed a rigid program of nutrition as well as exercise which he maintained for the rest of his life. He loved playing golf and cards, especially bridge and he was still actively playing in 3 bridge clubs. For 57 years, he was a very dedicated member of the United Church of Christ - Congregational in Grinnell. Charlie's family and friends were the center of his life. The "Bethel Mission on 900 - 11th" was legendary and Charlie was always the genial host, welcoming, hospitable and generous.

Survivors include his wife of 58 years, Esther of Grinnell; three children, Chuck (Nancy) Bethel of St. Paul, Minnesota, Anne (Eric) Pederson of Grinnell and Susan Bethel of Coralville; seven grandchildren, Amy, Chet and Nick Bethel, and Ally, Christopher, Jordan and Sam Pederson; and two sisters, Virginia Wolfe of Columbus, Ohio and Nancy (Alford) Horsely of Chillicothe, Ohio. He was preceded in death by his parents; one son, John Bethel; two brothers, Howard and John; and one sister, Nellie.

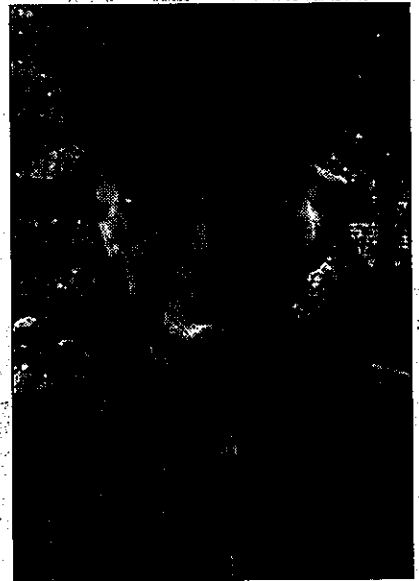
A memorial service has been scheduled for 10:30 a.m., Saturday, October 20, at the United Church of Christ - Congregational in Grinnell. Visitation with the family present will be held one hour prior to service time (9:30 - 10:30) at the church.

Memorial contributions may be directed to the United Church of Christ - Congregational, Mayflower Community Health Care Center or to Grinnell Regional Hospice.

64-R 10-15-2012

Charles Eugene Bethel

Charles Eugene Bethel, 86, of Grinnell, died October 10, 2012, at the Mayflower Community Health Care Center in Grinnell.



Charles was born December 11, 1925, in Chillicothe, Ohio, the oldest son of Clinton Dennis Bethel and Virginia Ruth McDonald Bethel. He was raised in the Chillicothe area and was a 1943 graduate of Clarksburg High School. He was a veteran of the United States Army serving in Europe during World War II.

Following his army service he graduated from Miami - Jacobs College in Dayton, Ohio, where he earned an accounting degree. He was employed by General Motors in Dayton and later A.O. Smith, Inc. in both Ohio and California. While in California he met a young teacher, Esther Ann Jones.

On June 19, 1954, they were united in marriage in Grinnell. The couple then lived in Troy, Ohio, prior to moving to Grinnell in 1955.

As a successful entrepreneur and business broker, Charlie specialized in acquiring, rebuilding and operating troubled businesses. In these pursuits, he was both visionary and optimistic in recognizing new opportunities.

Throughout Charlie's life he was a strong advocate of exercise and fitness. After a cancer diagnosis and surgery in 1987, he followed a rigid program of nutrition as well as exercise which he maintained for the rest of his life. He loved playing golf and cards, especially bridge, and he was still actively playing in three bridge clubs. For 57 years, he was a very dedicated member of the United Church of Christ - Congregational in Grinnell. Charlie's family and friends were the center of his life. The "Bethel Mission on 900 - 11th" was legendary and Charlie was always the genial host, welcoming, hospitable and generous.

Survivors include his wife of 58 years, Esther of Grinnell; three children, Chuck (Nancy) Bethel of St. Paul, Minnesota, Anne (Eric) Pederson of Grinnell, and Susan Bethel of Coralville; seven grandchildren, Amy, Chet and Nick Bethel, and Ally, Christopher, Jordan and Sam Pederson; and two sisters, Virginia Wolfe of Columbus, Ohio, and Nancy (Alford) Horsely of Chillicothe, Ohio. He was preceded in death by his parents; one son, John Bethel; two brothers, Howard and John; and one sister, Nellie.

A memorial service has been scheduled for 10:30 a.m., Saturday, October 20, at the United Church of Christ - Congregational in Grinnell. Visitation with the family present will be held one hour prior to service time (9:30 - 10:30) at the church.

Memorial contributions may be directed to the United Church of Christ - Congregational, Mayflower Community Health Care Center or to Grinnell Regional Hospice.

THURSDAY, OCTOBER 18, 2012

CHARLES EUGENE BETHEL

Charles Eugene Bethel, 86 of Grinnell, died Oct. 10, at the Mayflower Health Center in Grinnell. Services will be at 10:30 a.m., Oct. 20, at the United Church of Christ - Congregational in Grinnell.

As a successful entrepreneur and business broker, Charlie once was a partner in the Star Inn, Hwy. 21 and I-80.

Survivors include his wife of 58 years, Esther of Grinnell; three children, Chuck (Nancy) Bethel of St. Paul, Minnesota, Anne (Eric) Pederson of Grinnell and Susan Bethel of Coralville; seven grand-children, two sisters.



Record

64-R 10-11-2012

Charles Bethel

Charles Bethel died Wednesday, Oct. 10, 2012, at the Mayflower Community Health Care Center. Services are pending at this time.