

Charles E. Douglas, Sr.



Charles E. Douglas, Sr., 72, of Grinnell died Thursday, Oct. 9, 2008, at Iowa Methodist Medical Center in Des Moines.

A funeral service will be held Tuesday, Oct. 14, at Smith Funeral Home with John Epperson, pastor of Grinnell Christian Church, officiating. Interment will be at Hazelwood Cemetery. Visitation will begin at 12 noon on Monday at the Smith Funeral Home with family members present to greet friends from 5 to 8 p.m. Memorials may be made to the Charles E. Douglas, Sr. Memorial Fund. Online condolences may be submitted to the Douglas family at www.smithfh.com.

He was born, the son of Maurice and June Andes Douglas, in Malcom. He was raised on the family farm and educated at rural schools near his home. He graduated from BGM High School in Brooklyn with the class of 1954.

He enlisted in the United States Air Force on July 21, 1954, in Des Moines and served in the United States, England and occupied Germany. He was honorably discharged from active duty on Oct. 31, 1974, at Vance Air Force Base in Oklahoma.

He was united in marriage with Ruby Lee Criswell on Oct. 10, 1956, in Grinnell. Upon his retirement from the United States Air Force, he worked at several businesses in Grinnell including Farmhand, McNally's, Grinnell Beverage, Cargill, Manatts, Donaldson's and Grinnell Mutual Reinsurance. He was an outdoorsman who enjoyed fishing, hunting and trapping. He also enjoyed listening to bluegrass music, attending auctions, collecting toys, gardening, yardwork, and watching the finches in his back yard.

He is survived by his wife of 52 years, Ruby Douglas of Grinnell; his children, Brenda Lowry of Kellogg, Cheryl Banzhaf of Marshalltown, Vicky Zeltman of Eldora, Connie Thompson of Montezuma, Charles Douglas, Jr. of Pella, Rhonda Carroll of Newton, and Tammy Machin of Kellogg; 19 grandchildren; 17 great grandchildren; his brother, Ray Douglas of Bettendorf; and his sisters, Grace LaKose of Brooklyn, Jan Douglas of Des Moines, and Kay Rohm of Marysville, Calif. He was preceded in death by his parents; his brothers, Loren and Maurice Jr.; and his grandson T.J. Douglas.

Charles E. Douglas Sr., 72

Charles E. Douglas Sr., age 72, of Grinnell, died Thursday, Oct. 9, 2008, at Iowa Methodist Medical Center in Des Moines.

A funeral service was held at 10:30 a.m. on Tuesday, Oct. 14, at the Smith Funeral Home in Grinnell with the Rev. John Epperson, pastor of the Grinnell Christian Church, officiating. Interment was at Hazelwood Cemetery in Grinnell.

Memorials may be directed to the Charles E. Douglas Sr. Memorial Fund. Online condolences may be submitted to the Douglas family at www.smithfh.com.

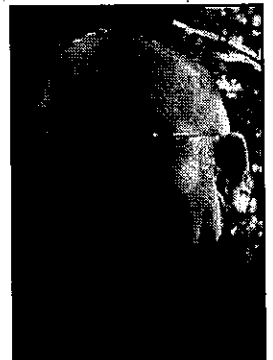
Charles was born the son of Maurice and June Andes Douglas in Malcom. He was raised on the family farm and was educated at rural schools near his home. He graduated from BGM High School in Brooklyn, with the class of 1954.

He enlisted in the United States Air Force on July 21, 1954, in Des Moines, and served domestically in the United States, England, and occupied Germany. He was honorably discharged from active duty on Oct. 31, 1974, at Vance Air Force Base in Oklahoma.

Charles was united in marriage to Ruby Lee Criswell on Oct. 10, 1956, in Grinnell. To this union were born their children, Brenda, Cheryl, Vicky, Connie, Charles Jr., Rhonda, and Tammy. Upon his retirement from the United States Air Force, he worked at several local businesses in Grinnell including Farmhand, McNally's, Grinnell Beverage, Cargill, Manatts, Donaldson's and Grinnell Mutual Reinsurance. He was an outdoorsman and he enjoyed fishing, hunting and trapping. His enjoyments included listening to bluegrass music, attending auctions, collecting toys, gardening, yardwork, and watching the finches in his backyard.

Charles is survived by his wife of 52 years, Ruby Douglas, of Grinnell; his children, Brenda (Dennis) Lowry of Kellogg, Cheryl (Scott) Banzhaf of Marshalltown, Vicky (Don) Zeltman of Eldora, Connie (George) Thompson of Montezuma, Charles (Melinda Hensley) Douglas Jr. of Pella, Rhonda Carroll of Newton, Tammy (Chad) Machin of Kellogg; 19 grandchildren; 17 great-grandchildren; his brother, Ray Douglas of Bettendorf; and his sisters, Grace LaKose of Brooklyn, Jan Douglas of Des Moines, and Kay Rohm of Marysville, Calif.

Charles was preceded in death by his parents; his brothers, Loren and Maurice Jr.; and his grandson T.J. Douglas.



HR 10/13/08

BC 10/15/08