

at Grinnell Regional Medical Center.

A visitation with the family will be held on Tuesday, Oct. 2, from 5 to 8 p.m. at Smith Funeral Home in Grinnell. A memorial service will be held at a later date.

Memorials may be directed to the American Kidney Foundation.

Shirley was born July 12, 1933, in Grinnell, the daughter of Frank Thomas and Mayme Gooch. After both parents died when Shirley was a baby, she was raised and later adopted by Henry and Clara Selle of Grinnell.

After graduating from Grinnell High School in 1951, Shirley married Melvin J. Stoker on July 20, 1951, in Grinnell. They moved to a small farm west of Grinnell in the Rock Creek neighborhood and later to another farm near Allison, Iowa. They farmed for over 22 years, raising pigs and chickens and farming the fields. After moving back to Grinnell in 1972, Shirley worked as a secretary and as a medical transcriptionist for Dr. Raymond Light before retiring in 1998.

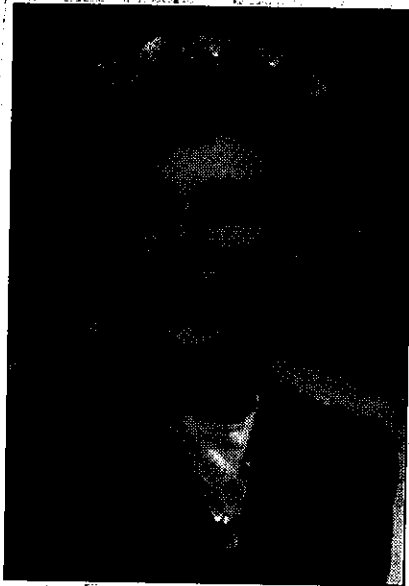
In addition to raising their two children, Shirley and Melvin enjoyed square dancing. They would often travel all over the state to different events and conventions and developed a wide network of friends through this. They also enjoyed spending time with their grandchildren, and great grandchildren.

Shirley was a member of United Methodist Church in Grinnell and the Grinnell Ladies Elks. She enjoyed quilting and crafts, and was an avid fan of all sports and enjoyed cheering on the local teams. She also loved flowers and her garden and in her later years, she enjoyed watching hummingbirds come to her window.

Survivors include her husband, Melvin J. Stoker of Grinnell; one son, Harlan Stoker of Norfolk, Va.; one daughter, Lisa Wren of Overland Park, Kan.; five grandchildren; and three great grandchildren.

She was preceded in death by her parents; four brothers, Raymond, Ernest, Charles and Thomas Selle; and one sister, Pauline Roe.

Shirley F. Stoker



Shirley F. Stoker, 79, of Grinnell, died on Wednesday, Sept. 26, 2012,

GHR 10-1-2012