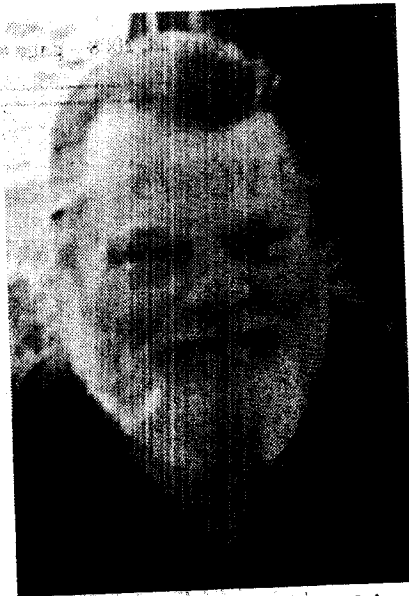


Glen E. Beam



Glen E. Beam, 59, of Des Moines and formerly of Grinnell died on Tuesday, Jan. 22, 2008, at Iowa Methodist Medical Center in Des Moines.

A memorial service for Glen Beam will be held at 1 p.m. on Tuesday, Jan. 29, at the Smith Funeral Home in Grinnell, with the Rev. John Epperson, pastor of the Grinnell Christian Church, officiating. Veteran's ceremonial rites will be held with members of the Grinnell American Legion led by Mike Mintle, chaplain. Honorary casket bearers will include Lonnie Beam, Moe Conn, Bill and Danielle Causby, Gary Simpson, Mark Stevens and Tanner Joe Wignail. Burial will be in Hazelwood Cemetery in Grinnell.

Born Sept. 19, 1948, in Grinnell, he was the son of George and Charlene Rutledge Beam and was raised in Grinnell, graduating from Grinnell High School in 1967.

He was a veteran of the United States Marine Corps, serving during the Viet Nam Conflict.

On June 12, 1967, he married Sherry Thon in Grinnell. The couple lived in Grinnell and Newton prior to moving to Des Moines, where they made their home for 32 years. He was a self-employed mail courier for many years.

He loved riding his Harley-Davidson motorcycle and taking trips to the Black Hills with his grandson, Tanner. He enjoyed spending time with his family and friends and with his two pet dogs, Mollie and Libby.

Survivors include his wife; two children, Danielle Causby and Lonnie Beam; and a grandson, Tanner Joe Wignail, all of Des Moines.; two sisters, Lorna Beam of Newport, N.C., and Patricia Huff of Berkeley, Calif.; and a niece and nephew. He was preceded in death by his parents.

Memorial contributions may be directed to the Brain Injury Association.

HR 1/28/08