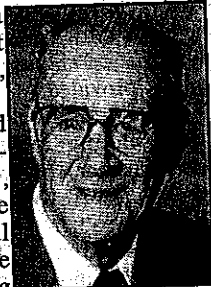


Obituaries

Delmar Schultz, 89, Pella

Delmar Schultz was born July 15, 1919 to William Carl Henry Schultz and Minnie Rose Castorf Schultz on a farm northwest of Reasnor, Iowa.

He passed away on Monday, January 5, 2009 at the Pella Regional Health Care Center-Long Term Care at the age of eighty-nine.



D. Schultz

Delmar received his education at the Palo Alto #11 rural school, which was near his farm home.

On December 22, 1939 Delmar was united in marriage with Mathilde Brand at Sully, Iowa. To this union two sons were born: Terry Lee and Roger Dean.

Delmar was employed by Vander Ploeg Bakery and Pella Produce in Pella before being inducted in the armed service in 1944, serving in the 6th Armored Division in the European Theater under General Patton. He was wounded in action in Zeitz, Germany for which he was awarded the Purple Heart.

Following his discharge from the Army in 1945, he began working

for the United States Civil Service serving as a rural mail carrier for the Sully area for thirty-three years. He retired in 1978 and continued living in Sully.

Delmar was a faithful member of the Sully Community Church. He was a life-time member of the National Rural Carriers Association, Iowa Rural Letter Carriers, and the Pella American Legion Post 89.

Those left to cherish his memory are: his wife of seventy years, Mathilde, of Pella; his two sons and their wives: Terry and Karen Schultz of The Villages, Florida and Roger and Carol Schultz of Clive, Iowa; four grandchildren: Kim (Matt) Doty, Kris (Wayne) Vander Leest, Cindy (Ryan) Walters, and Sena (Mike) Walters; and six great-grandchildren.

Those preceding him in death are: his parents, William and Minnie Schultz; parents-in-law, Charles and Marie Brand; and his three brothers: Lawrence, Raymond, and Donald Schultz.

Delmar's family will always cherish the treasured memories he made in his lifetime.

Funeral services were held at 10 a.m. Saturday, Jan. 10, at the Sully Community Church. Burial took place at the Sully Cemetery.